



Opalescence®

**n o w**™

professional tooth whitening

# MONITORED WHITENING



An exam and diagnosis should always be performed prior to whitening your teeth. It's important for you to be educated with the whitening process.

Dental restorations, such as crowns, fillings, etc., will not bleach. Whitening without dentist monitoring can cause a mismatch and may result in the need for expensive restoration replacement. Ideally, whitening should be performed prior to other esthetic dental procedures. Your dentist will then match your new restoration to your lighter shade.

Also, teeth with defective restorations or decay should be addressed prior to whitening. Whitening agents on an unhealthy tooth can lead to severe discomfort. Whitening may cause sensitivity especially for patients who already have sensitive teeth. We can monitor and provide the appropriate treatment should this occur.

# CONSISTENT WHITENING



Occasionally, too much whitening can cause some teeth to become translucent, causing the teeth to appear darker. This can also cause metal fillings to show through more. We can help to ensure that you don't over whiten and that you achieve the smile you want.

# CUSTOMIZED CARE



Our professional system is designed to fit your schedule. You have the choice of whitening during the day at any time, to fit your busy lifestyle, whatever works best for you. Over-the-counter products will only whiten for short periods of time, with frequent touch-ups. We offer products that will whiten teeth much faster than store-bought systems. Opalescence NOW lets you customize bleaching the professional way, using semi-custom trays, ensuring you get the best whitening results possible.

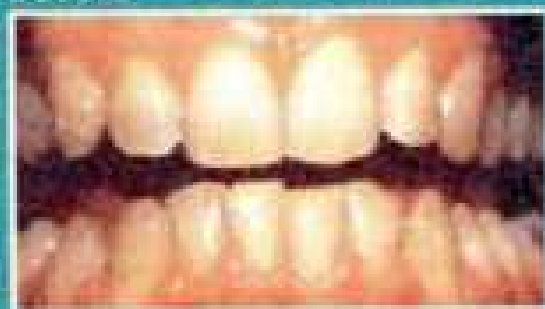
# CUSTOMER SATISFACTION



Whitening your teeth is irreversible. When hair is bleached, it can easily be dyed or at least grow out to the original color within a few months. This is not the case with teeth.

Your satisfaction is the top priority of our office. It is important to us that you are happy with your smile. We have the means to ensure that you get the **FASTEST, SAFEST, MOST POWERFUL** whitening available. We have had remarkably high results (90 - 95% success rate) and our goal is to make sure you are completely satisfied.

Before



After 5 days treatment



(Photos courtesy of Dr. Robert Nixch, Los Angeles, CA)